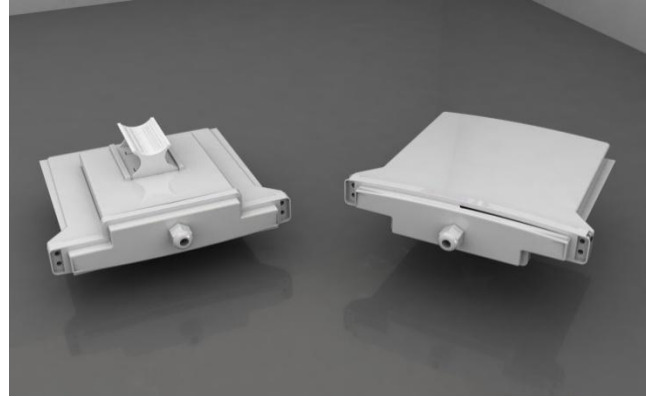
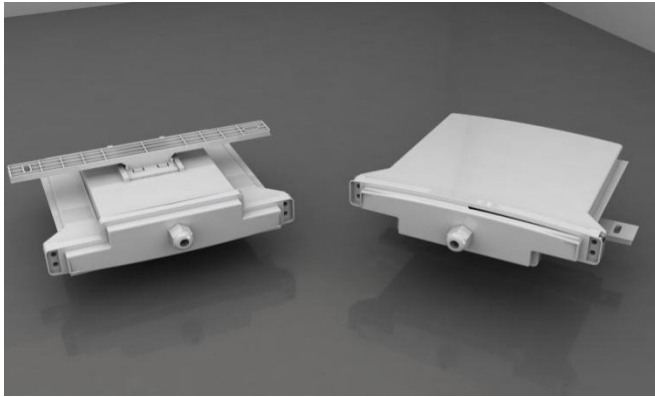


LTE OUTDOOR CPE

Model: TLE 5010-PE



INTERFACE

Wireless	1 x Wireless LTE connection
Wired (LAN)	1 x RJ-45 ports 10/100Base-T Ethernet LAN Auto sensing with PoE

ETHERNET INTERFACE

Ethernet Connectors	RJ-45 Jacks, 1 Port 10/100 Base-TX with Auto-MDIX -Ports PoE (Data+Power IN)
Standards	IEEE Std.802.2 10BASE-T 10Mbps,Half/Full Duplex; IEEE Std.802.3u 100BASE-TX,10/100Mbps, Half/Full Duplex;IEEE Std.802.3x Flow control and Back-pressure
Surge Protection	Protection against initial ESD/EFT Transient Suppression
Protocols	CSMA/CD
Technology	Store & Forward Switching architecture
Network Cable	2-Pair UTP/STP Cat 5 24AWG Cable
LED's	Link/Activity for Ethernet Port
Power Over Ethernet Injector: Power Supply(IN) for CPE.	Power over Ethernet 12V, 1A (12 Watts) on Spare pair to supply power to the CPE

NETWORKING

Telenet Systems Pvt. Ltd.

2, Mani Bhuvan, Cama Road, Ghatkopar, Mumbai 400 086, Maharashtra, INDIA

T: +91.22.25138325 / 25158374 F: +91.22.25104911 E: info@telenetsystems.com W: www.telenetsystems.com

Networking	Built-in DHCP client and server , Static route, Firewall, NAT, DNS Proxy, Built In NTP SERVER, UPnP, statistics
Test	PING function and Trace Route function, Nslookup
VLAN	VLAN Support ; Management VLAN

LTE RADIO

Radio	TD-LTE Radio
Frequency Range	2300 - 2400 MHz
General Compliance	3GPP TS 36.101
Release	3GPP Release 9
Duplexing	TDD
Performance	UE category 4 throughput (85 Mbps DL , 40 Mbps UL) on 20 Mhz
Max Modulation Rates	DL: 64 QAM ; UL: 16 QAM
Band	E-UTRA Band 40
Bandwidth	5MHz/10MHz/15MHz/20MHz Supported
RF Output transmission power	23 dBm
Receiver Sensitivity	-105 dBm
MIMO capability	1 T x 2 R

ANTENNA

Internal Antenna gain	12 dBi, (Optional 8 dBi)
Internal Antenna 3 dB Beam width	< 33 Degree X 33 Degree for 12 dBi < 60 Degree X 60 Degree for 8 dBi antenna
Internal Antenna Polarization	Cross Polarisation
External Antenna Connector	1 (Optional)

MANAGEMENT

Management – Device	HTTP Web-based GUI, Telnet, SSH Management, TR 069(Under development)
Firmware Upgrade	WebGUI manual upgrade ; Keep setting when Firmware Upgrade
LED indication	Power, Ethernet , Wireless Signal Strength
Authentication	Embedded USIM

Telenet Systems Pvt. Ltd.

2, Mani Bhuvan, Cama Road, Ghatkopar, Mumbai 400 086, Maharashtra, INDIA

T: +91.22.25138325 / 25158374 F: +91.22.25104911 E: info@telenetsystems.com W: www.telenetsystems.com

POWER

Power options	100-270 V 50/60 Hz, Indian PIN type Powering through POE DC power
Power Method	Passive Power over Ethernet
Max Power Consumption	5 Watts
Power Supply	12V, 1A (12 Watts)
POE Injector Compliance	RoHS

PHYSICAL

Physical Dimension/ Form factor	Outdoor – Compact, sleek and easily mountable on house window Pole or Wall Mountable
Weight	< 800 g
Operating temperature	(0 to 50 deg cent)Outdoor Temperature
Humidity	5 to 95% Non Condensing

ENCLOSURE CHARACTERISTICS

Enclosure Characteristics	Outdoor - Dust Protected , Protected from Spray Water up to 60 Degree from V , 50 cm Drop Test, IP 65 Enclosure
---------------------------	---

Telenet Systems Pvt. Ltd.

2, Mani Bhuvan, Cama Road, Ghatkopar, Mumbai 400 086, Maharashtra, INDIA

T: +91.22.25138325 / 25158374 F: +91.22.25104911 E: info@telenetsystems.com W: www.telenetsystems.com